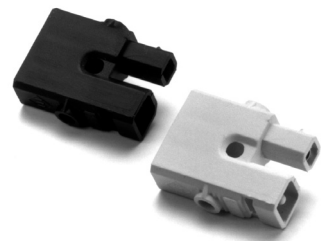


LOW VOLTAGE CONNECTING SYSTEM AC 162



Connectors STS Connection to Conductors by Clamping Screws

Approvals													
Nominal Cross Section mm ²	2,5												
Voltage Rating V	48												

The Principle

A typical feature of the „AC 162“ system is that both plug and socket are integrated in just one connector. This way, it is possible to assemble electric installation, no matter of what extent and variety they are, from a small number of various components.

Safety and Quick Installation

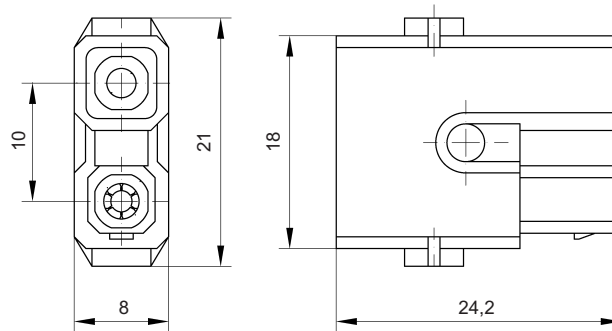
An electric connection made by silver plated contacts and a conductor size 2.5 mm² with tinned strands as well as an insulation for use with higher temperatures protect the low-voltage installation from being overheated and, they allow conductor lengths between transformer and consumer of up to 18 m (20 W).

Connectors STS, Black or White

The 2 pole STS connector contains plug and socket. It can be connected to another connector of the same kind by simply rotating it through 180°.

Technical Data

Mouldings:	Polyamide 6/6, black or white Continuous working temp. 100° C Short-time temperature 160° C Flammability class UL 94 : V-0
Contacts:	Brass, silver plated
Screws:	M 3 x 4.5 mm Steel, zinc plated, chromed ⌚ max. 0.3 Nm
Current Rating:	25 A
Conductor Size:	0,5 mm ² to 2,5 mm ² with ferrules



AC 162 STS - Connectors			
List No.	Order No.	Kgs. per 100 Pcs.	Packing Unit
AC 162 STS/2 white	14 01 52	0,38	200
AC 162 STS/2 black	14 01 62	0,38	200

LOW VOLTAGE CONNECTING SYSTEM AC 162



■ Connecting Cables ALC Extension Cables VLC

Approvals													
Nominal Cross-Section mm ²	2,5												
Voltage Rating V	48												

Connecting and extension cables are available in lengths of 0.35, 0.60, 1.20, 1.80 and 2.40 m. Other lengths upon request.

These cables consist of double-insulated tinned strands, halogen-free and hardly inflammable insulation against raised temperatures.

Black connectors: cables violet
White connectors: cables white

■ Connecting cables ALC

as connector cord set on one side and free wire ends with fitted ferrules for connection of transformers, lamp holders... on the other side.

■ Extension cables VLC

as connector cord set on both sides.

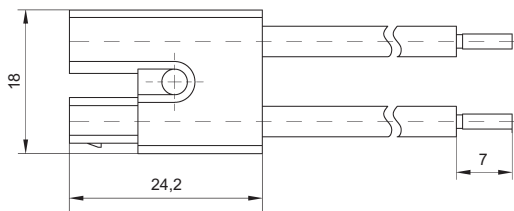
■ Lengths

All lengths include cables with connectors.

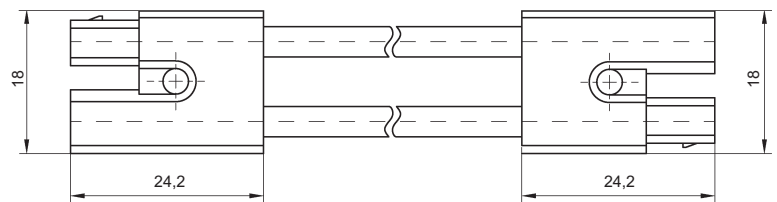
■ Technical Data

Mouldings:	Polyamide 6/6, black or white Continuous working temp.: 100° C Short-time temperature: 160° C Flammability class UL 94 : V-0
Contacts:	Brass, silver plated
Connections:	Crimp connection
Current Rating:	25 A
Conductor Size:	2,5 mm ² - fine strand, tinned
Insulation/ Conductors:	Halogen-free, hardly inflammable to UL 94 : V-0 Continuous working temp. 120° C

ALC



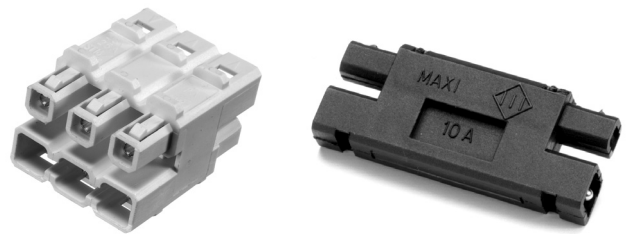
VLC



Connecting Cables ALC				Extension Cables VLC				Packing Unit
List No./ Length	Order No. white	Order No. black	Kgs. per 100 Pcs..	List No./ Length	Order No. white	Order No. black	Kgs. per 100 Pcs..	
AC 162 ALC 035	14 13 52 03	14 13 62 03	2,6	AC 162 VLC 035	14 23 52 03	14 23 62 03	3,0	50
AC 162 ALC 060	14 13 52 06	14 13 62 06	4,2	AC 162 VLC 060	14 23 52 06	14 23 62 06	4,6	50
AC 162 ALC 120	14 13 52 12	14 13 62 12	8,0	AC 162 VLC 120	14 23 52 12	14 23 62 12	8,4	50
AC 162 ALC 180	14 13 52 18	14 13 62 18	11,9	AC 162 VLC 180	14 23 52 18	14 23 62 18	12,3	50
AC 162 ALC 240	14 13 52 24	14 13 62 24	15,7	AC162 VLC 240	14 23 52 24	14 23 62 24	16.1	50

LOW VOLTAGE CONNECTING SYSTEM AC 162

- Compact Distributors KV
- System Distributors SV
- Compact Fuse Holders SIK



Approvals														
Nominal Cross-Section mm ²	2,5													
Voltage Rating V	48													

6way distributing blocks for making contact right behind the transformer (system distributor) or to be inserted within the following installation (compact distributor) to allow branching-off to other consumers.

■ Compact Distributors KV

6way distributing blocks without feed line. Seeing that one terminal is occupied by the feed line connector, there are only 5 outgoing lines available.

■ System Distributors with Connecting Cable SV

6way distributing blocks with a connecting cable 7.5 cm long with ferrules. All the 6 terminals are free available as outgoing lines. No need to use a separate connecting cable.

■ Compact Fuse Holders SIK

These fuse holders consist of an individual element to be inserted within an electrical installation between two extension cables wherever and whenever required.

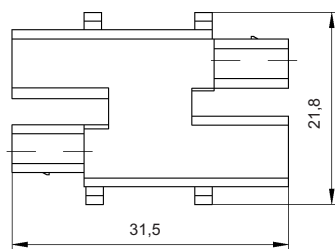
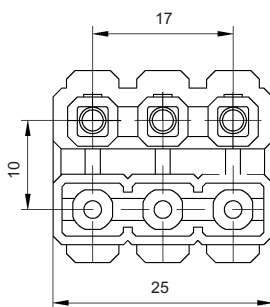
Suitable for standard motorcar fuse links FKS (to DIN 72 581) up to 10 Amp.

Colour: black or white

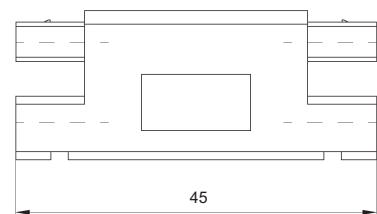
■ Technical Data

Mouldings:	KV + SV : Polyamide 6/6, white SIK : Polyamide 6/6, white or black Continuous working temp. 100° C Short-time temperature 160° C Flammability class UL 94 : V-0
Contacts:	Brass, silver plated
Current Rating:	KV + SV : 25 A SIK : 10 A

AC 162 KV



AC 162 SIK



AC 162 KV - Compact Distributors			AC 162 SV - System Distributors with Connecting Cable			AC 162 SIK - Compact Fuse Holders			
List No.	Order No.	Kgs. per 100 Pcs.	List No.	Order No.	Kgs per 100 Pcs.	List No.	Order No.	Kgs per 100 Pcs.	Packing Unit
AC 162 KV/ 6 white	14 06 06	0,93	AC 162 SV/ 6 white	14 07 06	1,05	AC 162 SiK 10 white	14 09 52	0,60	25
						AC 162 SiK 10 black	14 09 62	0,60	25